

Interactive Diversity Calendar 2021

An equality, diversity and inclusion calendar for you - because, why not?*



HOW THE CALENDAR WORKS

Whole month event

JANUARY IS:

- Celebration of Life Month
- Alcohol Concern Dry January

Month of the year

JAN 01

Days of the week

Colour coded based on the strands of the equality act

- 01 Age
- 02 Disability (Inc Mental Health)
- 03 Gender Reassignment
- 04 Marriage and Civil Partnership
- 05 Pregnancy and Maternity
- 06 Race
- 07 Religion or Belief
- 08 Sex
- 09 Sexual Orientation

Impacts all groups*

Click on the day to be directed to useful sites

Dates of the month

M	T	W	T	F	S	S
				1	2	3
	4 World Braille Day	5	6	7	8	10
11	12	13	14	15	16	17 World Religion Day
18 Blue Monday Martin Luther King Jr. Day	19	20	21	22	23	24
25	26	27 Holocaust Memorial Day	28	29	30	31

*We have done our best to colour code against the equality act - many days will impact those with intersectional identities which will cross multiple strands of the equality act

The Equality Act

CLICK HERE



The Equality Act 2010 makes sure that people with particular characteristics are protected from discrimination. It is your right that you should not be treated differently based on:

- Age
- Disability
- Gender reassignment
- Marriage and civil partnerships
- Pregnancy or maternity
- Race
- Religion or belief
- Sex
- Sexual orientation

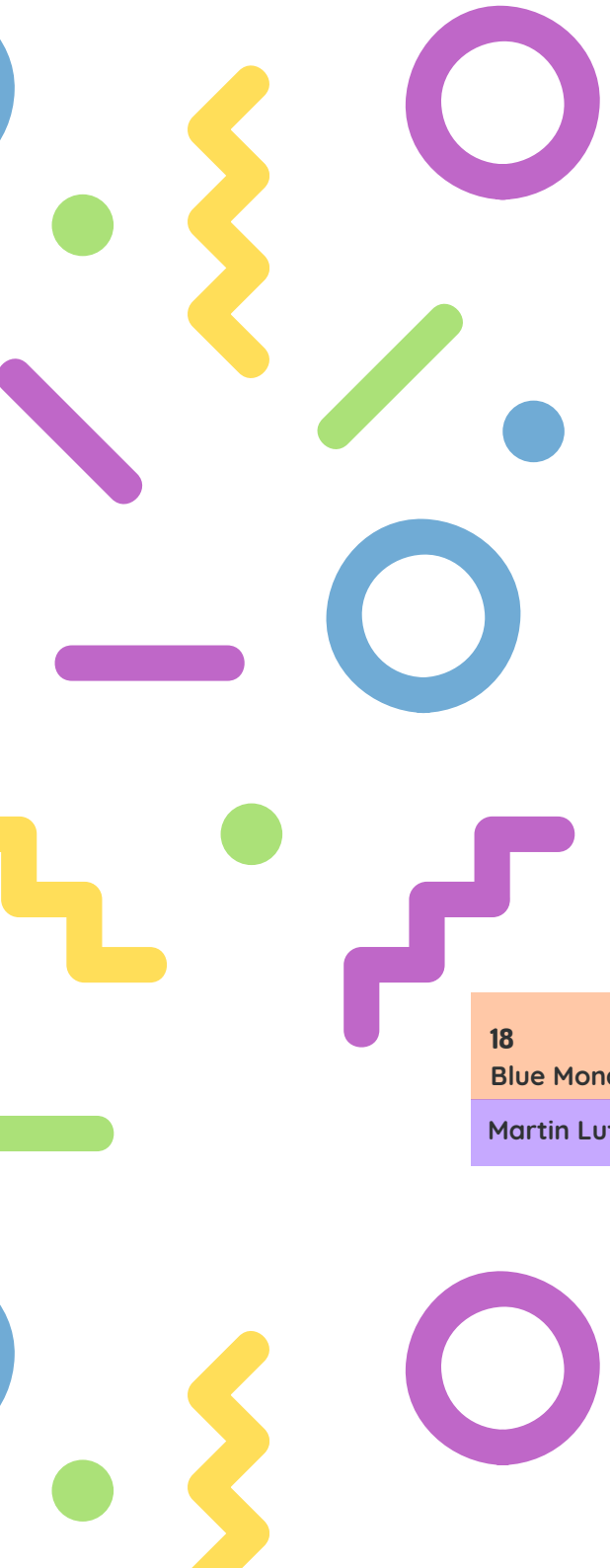
Discrimination means unfair treatment of somebody based on a particular characteristic.

Your rights are things you are born with that belong to you that nobody can take away.



JAN 01





JANUARY IS:

- Celebration of Life Month
- Alcohol Concern Dry January

Click on any awareness day to be directed to useful stuff!

JAN 01

M	T	W	T	F	S	S
				1 New Years Day	2	3
4 World Braille Day	5	6 Epiphany	7 Feat of the Nativity	8	9	10
11	12	13 Maghi	14	15	16	17 World Religion Day
18 Blue Monday Martin Luther King Jr. Day	19	20	21	22	23	24 International Day of Education
25	26	27 Holocaust Memorial Day	28	29 Mahayana New Year	30	31

COLOUR CODE

02 Disability (Including Mental Health)

07 Religion or Belief

Impacts all Groups

FEB 02



FEB 02

Click on any awareness day to be directed to useful stuff!



FEBRUARY IS:

- Lesbian, Gay, Bisexual and Trans History Month

M	T	W	T	F	S	S
1 World Hijab Day Imbolc	2 Candlemass	3	4 Time to Talk	5	6 Female Genital Mutilation Day	7
Children's Mental Health Week	9	10	11 Women and Girls in Science Day	12 Chinese New Year	13	14 St Valentine's Day
8	15	16 Shrove Tuesday	17 Ash Wednesday	18	19 Care Day	20 World Day of Social Justice
22	23	24	25 Purim (begins at sundown)	26 Stand up to Bullying Day	27	28
						29 08 Sex

COLOUR CODE



Impacts all Groups

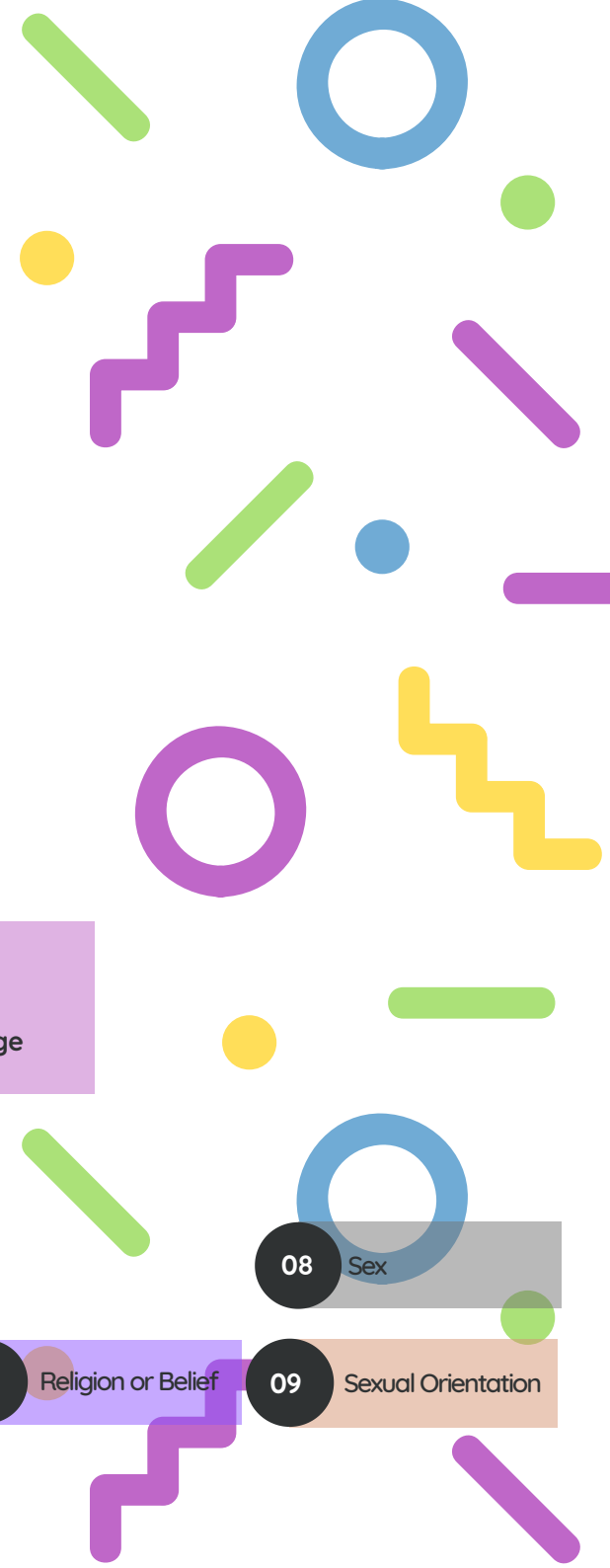
01 Age

02 Disability (Including Mental Health)

06 Race

07 Religion or Belief

09 Sexual Orientation





MAR 03

AND.

A WOMEN
STANDS U
FOR HER
WE STAND
EQA. ALL
WOMEN

DO

Click on any awareness day to be directed to useful stuff!

MAR 03

	M	T	W	T	F	S	S
1 Zero Discrimination Day	International Wheelchair Day	2	3 World Hearing Day	4	5	6	7
Reminder: Trans Women are Women!	8 International Women's Day	9	10	11 Lailat al Miraj	12	13	14 Mothering Sunday
	15	16 Young Carers Action Day	17	18	19	20 Day of Happiness	21 Elimination of Racial Discrimination World Down Syndrome Day
	22	23	24	25 Day of Remembrance of the Victims of Slavery and the Transatlantic Slave Trade	26 World Purple Day (Epilepsy Day)	27 Passover (begins at sundown)	28 Holi (begins in the eve)
	29 World Autism Awareness Week	30 World Bipolar Day	31 International Trans Day of Visibility				
						08 Sex	Impacts all Groups

COLOUR CODE

- 01 Age
- 02 Disability (Including Mental Health)
- 03 Gender Reassignment
- 06 Race
- 07 Religion or Belief
- 09 Sexual Orientation

APR 04



APR 04

APRIL IS:

- [Autism Awareness Month](#)
- [Stress Awareness Month](#)
- [Parkinson's Awareness Month](#)

Click on any awareness day to be directed to useful stuff!



M	T	W	T	F	S	S
			1	2 Good Friday	3	4 Easter Sunday
5 Easter Monday	6	7 World Health Day	8	World Autism Awareness Day	9	10
11						
12 Ramadan Begins (evening)	13 Vaisakhi	14	15	16	17	18
19	20	21	22 Stephen Lawrence Day	23	24	25
26 Lesbian Visibility Day and Week	27	28	29	30		

COLOUR CODE

02 Disability (Including Mental Health)

06 Race

07 Religion or Belief

09 Sexual Orientation



MAY 05



Click on any awareness day to be directed to useful stuff!

MAY IS:

- Mental Health Awareness Month

MAY 05

M T W T F S S

					1	2 International Family Equality Day
3 Deaf Awareness Week	4	5	6	7	8	9
10 Mental Health Awareness Week	11	12 13 Eid al Fitr* begins in the evening of the 12th and celebrations on the 13th*	14	15	16	
17 International Day Against Homophobia, Transphobia and Biphobia	18	19	20 Global Accessibility Awareness Day	21 World Day for Cultural Diversity for Dialogue and Development	22 Harvey Milk Day	23
24 Pansexual and Panromantic Awareness Day	25	26	27	28	29	30
31						

*Subject to the official sighting of the moon - check with your local Mosque for official date.

COLOUR CODE



Impacts all Groups

02

Disability (Including Mental Health)

07

Religion or Belief

09

Sexual Orientation

JUN 06



JUN 06

JUNE IS:
• LGBTQ+ Pride Month

Click on any awareness day to be directed to useful stuff!



M	T	W	T	F	S	S
	1 Global Day of Parents	2	3	4	5	6
7	8	9	10	11	12	13
14	15	16	17	18 Autistic Pride Day	19	20 World Refugee Day
21 Learning Disability Week	22	23 International Women in Engineering Day	24	25	26	27
28 Stonewall Riots Anniversary	29	30				

COLOUR CODE

Impacts all Groups

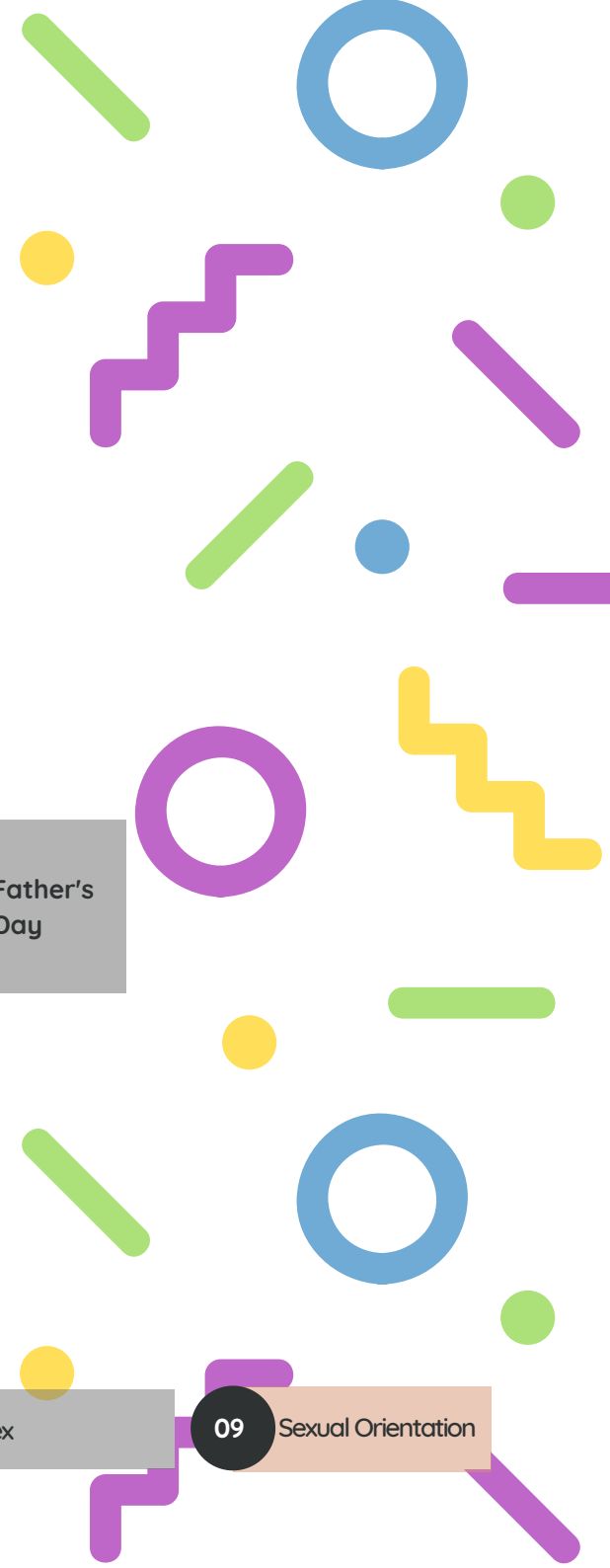
02 Disability (Including Mental Health)

03 Gender Reassignment

05 Pregnancy and Maternity

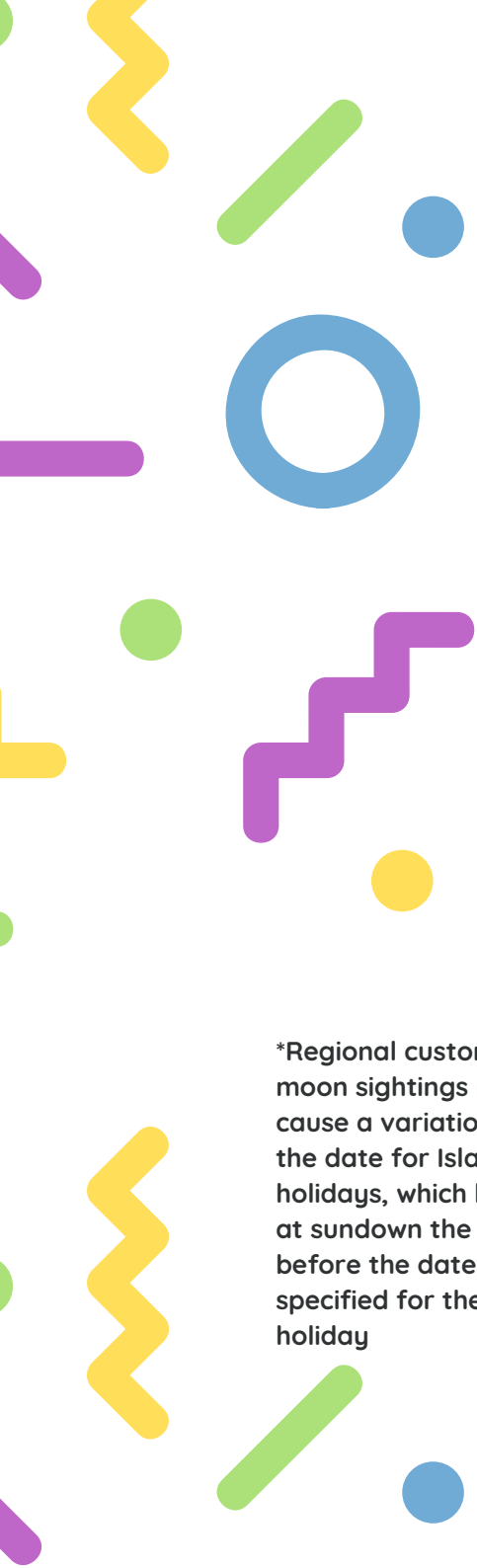
08 Sex

09 Sexual Orientation



JUL 07





Click on any awareness day to be directed to useful stuff!

JUL 07

M	T	W	T	F	S	S
			1	2	3	4
5	6	7	8	9	10	11 World Population Day
12 Non-Binary Awareness Week	13	14 International Non-Binary People's Day	15	16	17	18 Nelson Mandela International Day
19	20 Eid al Adha*	21	22	23 Eid al Adha Ends*	24	25
26	27	28	29	30 World Day Against Trafficking Persons	31	

*Regional customs or moon sightings may cause a variation of the date for Islamic holidays, which begin at sundown the day before the date specified for the holiday

COLOUR CODE



Impacts all Groups

06 Race

07 Religion or Belief

09 Sexual Orientation

AUG 08



AUG 08

Click on any awareness day to be directed to useful stuff!



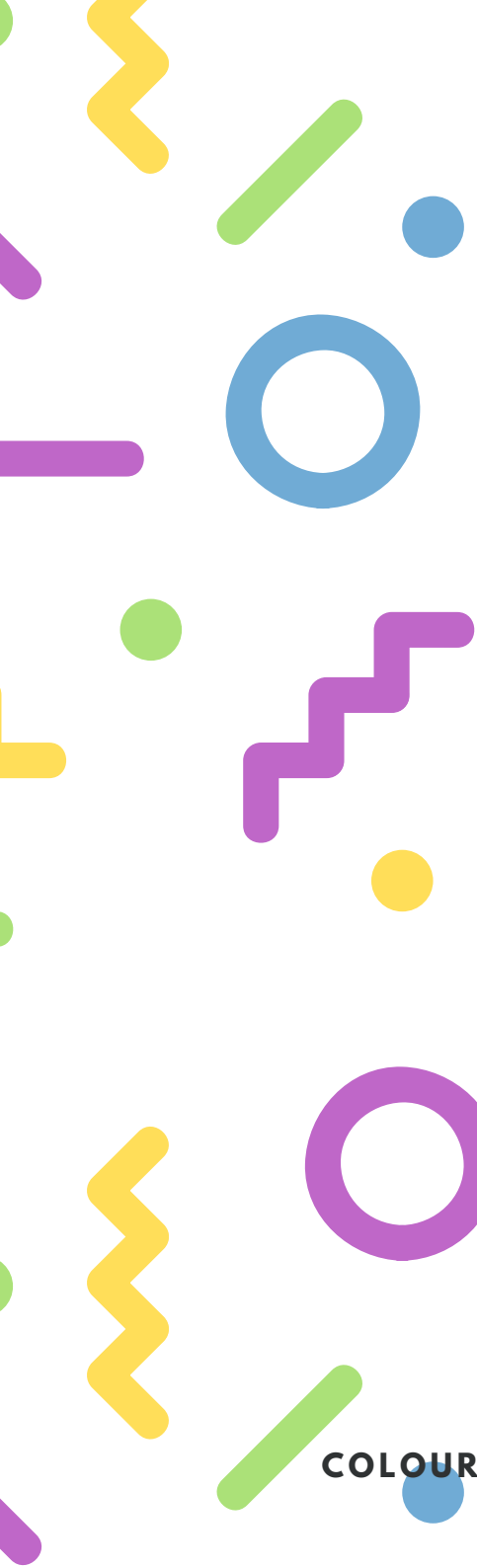
M	T	W	T	F	S	S	
						1	
2	3	4	5	6	7	8	
9 International Day of the World's Indigenous People	10	11	12 International Youth Day	13	14	15	16
Muharram Islamic New Year (begins eve)	17	18	19	20	21	22 International Day Commemorating the Victims of Acts of Violence Based on Religion or Belief	
23 International Day for the Remembrance of the Slave Trade and its Abolition	24	25	26	27	28	29	
30 Grief Awareness Day	31						

COLOUR CODE

- 01 Age
- 02 Disability (Inc Mental Health)
- 06 Race
- 07 Religion or Belief

SEPT 09

PAY
EQUAL



Click on any awareness day to be directed to useful stuff!



SEPT 09

M	T	W	T	F	S	S
		1	2	3	4	5
6 Rosh Hashanah (begins sundown)	7 Rosh Hashanah	8 Rosh Hashanah (ends nightfall)	9	10 World Suicide Prevention Day	11	12
13	14	15 Yom Kippur (starts at sunset)	16 Yom Kippur (ends at nightfall)	17	18 Equal Pay Day	19
20 Bisexual Awareness Week	21 World Alzheimer's Day	22	23 International Day of Sign Languages	24	25	26 European Day of Languages
International Week of the Deaf	International Day of Peace		Bisexual Visibility Day			
27	28	29	30			

COLOUR CODE



Impacts all Groups

02

Disability (inc Mental Health)

07

Religion or belief

08

Sex

09

Sexual orientation

OCT 10



OCT 10

OCTOBER IS:
 • Black History Month

Click on any awareness day to be directed to useful stuff!

M	T	W	T	F	S	S
				1 International Day of Older Persons	2 International Day of Non Violence	3
4 Dyslexia Awareness Week	5 World Teachers Day	6	7	8	9	10 World Mental Health Day
11 National Coming Out Day	12	13	14 World Sight Day	15	16	17
18	19	20 International Pronouns Day	21	22 International Stammering Awareness Day	23	24 Asexual Awareness Week
25	26 Intersex Awareness Day	27 National Mentoring Day	28	29	30	31 United Nations Day

COLOUR CODE



Impacts all Groups

01 Age

02 Disability (Inc Mental Health)

08 Sex

09 Sexual Orientation





NOV 11

OCTOBER IS:

- Islamophobia Awareness Month

Click on any awareness day to be directed to useful stuff!

NOV 11

M	T	W	T	F	S	S
1	2	3	4 Diwali	5	6	7 Trans Parent Day
8	9	10	11 Armistice Day	12	13 World Kindness Day	14 Remembrance Sunday
15 Trans Awareness Week	16 International Day for Tolerance	17	18	19 International Men's Day*	20 World Children's Day	21
22 UK Disability History Month Begins (to Dec 22)	23	24	25 International Day for the Elimination of Violence Against Women	26 ↑	Trans Day of Remembrance	28 Hanukkah (begins at sunset and ends nightfall 6th December)
29	30			*Remember, trans men are men!	27	

COLOUR CODE



Impacts all Groups

- 01 Age
- 02 Disability (Inc Mental Health)
- 03 Gender Reassignment
- 07 Religion or Belief
- 08 Sex

DEC 12



DEC 12

Click on any awareness day to be directed to useful stuff!

M	T	W	T	F	S	S
		1 World AIDS Day	2 International Day for the Abolition of Slavery	3 International Day of People Living With Disabilities	4	5
6 Hanukkah Ends	7	8	9	10 Human Rights Day	11	12
13	14	15	16	17	18	19
20 International Human Solidarity Day	21	22	23	24 Christmas Eve	25 Christmas Day	26 Boxing Day
27	28	29	30	31 New Years Eve		

COLOUR CODE

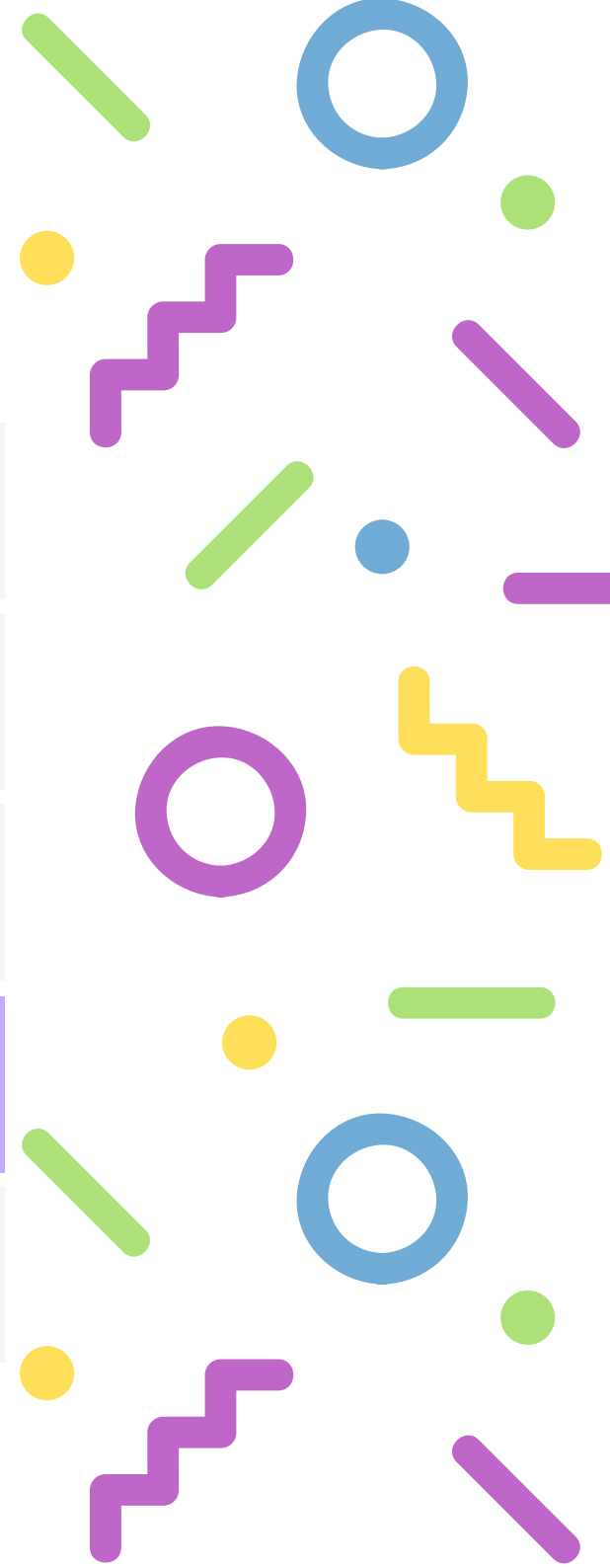


Impacts all Groups

02 Disability (Inc Mental Health)

06 Race

07 Religion or Belief



Embedding diversity, equality and inclusion into your spaces is made easier with this handy interactive calendar - click on any of the awareness days to be directed to useful stuff!



We are a grassroots organisation working in our spare time, we are human and can make mistakes from time to time. See something we have missed? Drop us a line at connect@dualfrequency.co.uk

I am an interactive resource intended to be used digitally. Save the environment by not printing me - but if you do - please recycle me.



dualfrequency.co.uk

